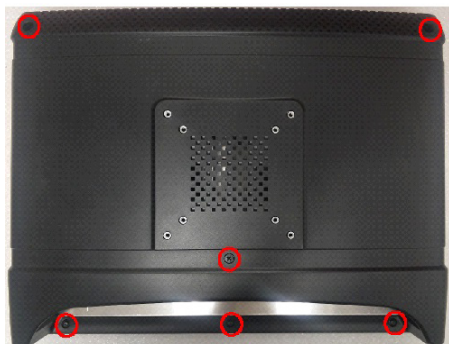


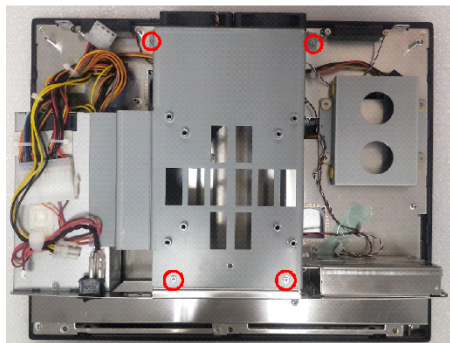
PPC-61x1C+PPC-MB-8260 System Installation User Guide

Motherboard Installation

1. Remove the 6 screws on the back cover.

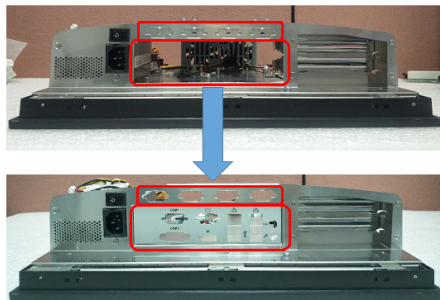


2. Remove the 4 screws on the reinforcing plate.



Motherboard Installation (Cont.)

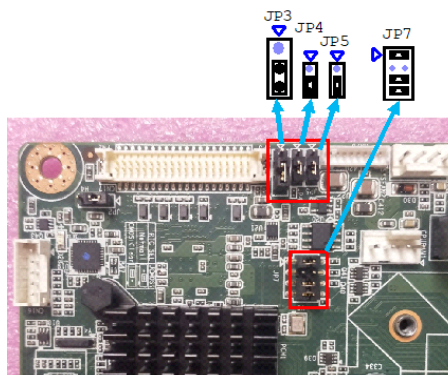
3. Install the I/O bracket for the motherboard and remove the shield for the DB9 port.



4. Adjust the jumper settings on the motherboard based on the configuration of the motherboard and machine.

Note: The settings for the jumpers on the 15", 17", and 19" panels are as follows:

PPC-6151C+PPC-MB-8260	Setting
JP7	JP(1-2) (5-6) (7-8) closed
JP3	JP(2-3) +3.3V
JP4	JP(2-3) +3.3V
JP5	JP(2-3) +3.3V



For more information on this and other Advantech products, please visit our website at:

<http://www.advantech.com>

For technical support services, please visit our support website at:

<http://www.advantech.com/support>

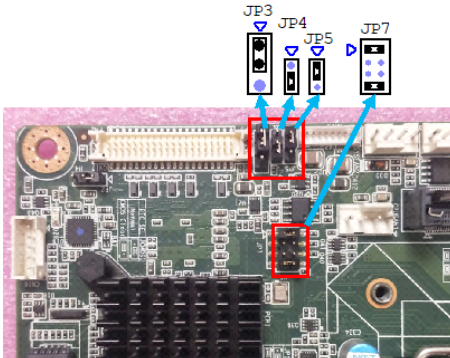
This manual is for PPC-61x1C+PPC-MB-8260.

Part No. 2003C61580
Printed in China

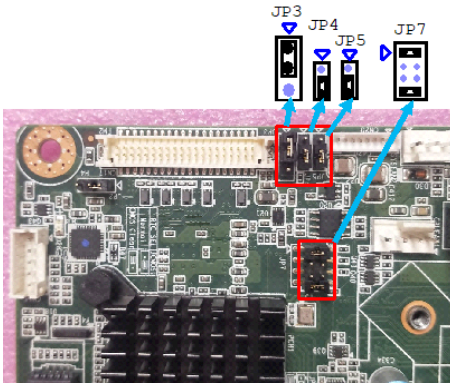
Edition 1
August 2023

Motherboard Installation (Cont.)

PPC-6171C+PPC-MB-8260	Setting
JP7	JP(1-2) (7-8) closed
JP3	JP(1-2) +5V
JP4	JP(2-3) +3.3V
JP5	JP(1-2) +5V



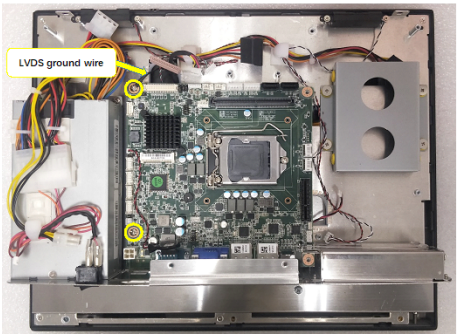
PPC-6191C+PPC-MB-8260	Setting
JP7	JP(1-2) (7-8) closed
JP3	JP(1-2) +5V
JP4	JP(2-3) +3.3V
JP5	JP(2-3) +3.3V



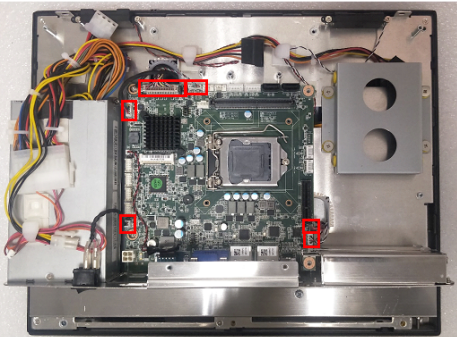
Motherboard Installation (Cont.)

5. Attach the motherboard to the machine chassis with 2 screws.

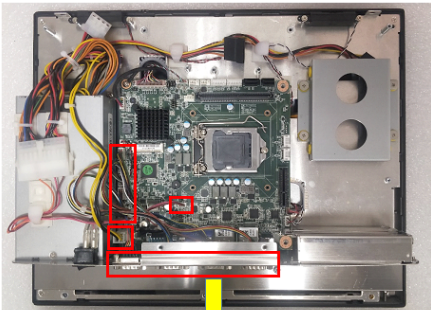
Note: The ground wire of LVDS should also be fixed in place.



6. Plug in the cable for the motherboard.



7. Plug in the power cable and the COM cable, and insert the hex screws for the I/O. Then take out the sticker from the accessory box and label the COM ports.

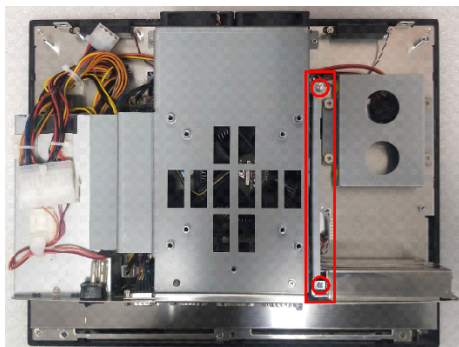


[illegible]

-
- Figure 1 shows the internal components of a laptop, including the motherboard, CPU, GPU, and cooling system. A red box highlights the GPU area, and a red label 'GPU' points to it.

-

10. Attach the riser card bracket with 2 screws.

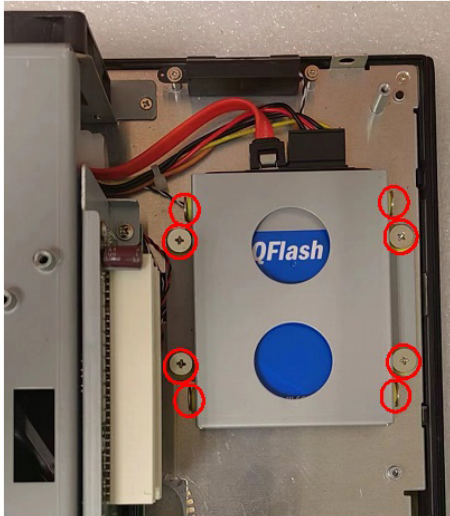


-

-

Motherboard Installation (Cont.)

b) Attach the SSD to the the module and fix them together onto the machine. Then plug in the cable.



13. Assemble the back cover.

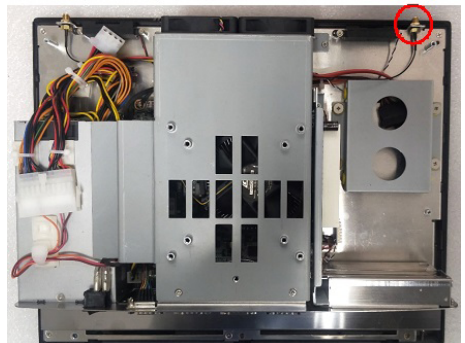


Wireless LAN Card Installation

1. Insert the wireless LAN card and plug in the antenna cable.



2. Install the antenna adapter to the bracket and attach the reinforcing plate.



Wireless LAN Card Installation (Cont.)

3. Assemble the back cover with screws and attach the receiving heads of the antenna.

