

# PCM-27J3AU

## 3-Port Audio Stereo, mPCIe, 3.5mm Jack

### Packing List

Before installation, please make sure that you have:

- 1 x Audio mPCIe Card
- 1 x 3-Port Audio I/O plate with iDoor bracket
- 1 x Wired signal cable
- 1 x Startup Manual
- 1 x Warranty Card

If anything is missing or damaged, contact your distributor or sales representative immediately.

### Installation

PCM Module with iDoor technology supports following iAutomation Computing Platforms:

- Embedded Automation PC UNO-2200/2300 series
- Control DIN-Rail PC UNO-1300/1400 series
- Control Cabinet PC UNO-3200/3300/3400 series
- Control Panel Computers TPC-xx81/xx82 series
- Thin Client Panel Computers TPC-xx51 series

See the following page for installation in TPC Embedded Panel Computers and UNO Embedded Computers.

### Documentation/Software Support Guide

The Startup Manual is included in the package. The other support documentation such as datasheets can be accessed from Advantech's website.

### Notes

For more information on this and other Advantech products, visit our websites at:

<http://www.advantech.com>

<http://www.advantech.com/eAutomation>

For technical support and service:

<http://www.advantech.com.tw/eservice>

This manual is for PCM-27J3AU

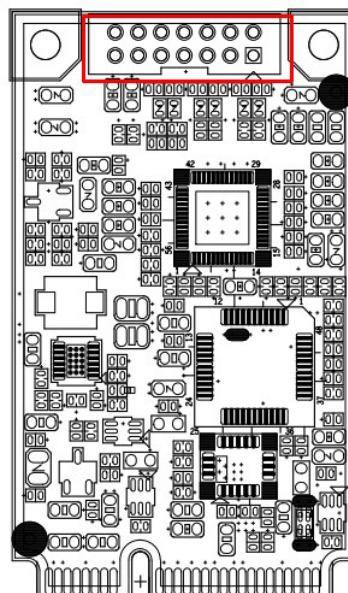
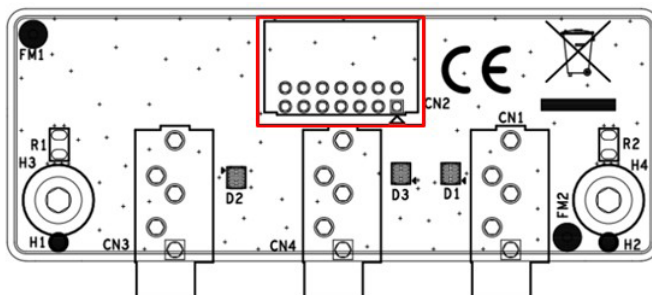
Part No: 200327J300

1st Edition

December 2015

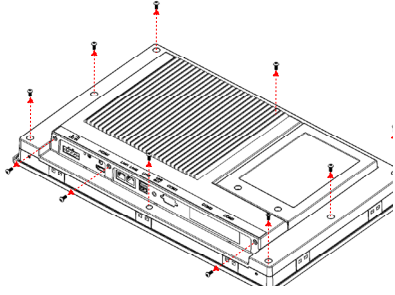
### PIN Assignment of Audio Signal Connector (14-Pin)

Description of PIN Use - I/O Board CN2 / mPCIe Card CN1			
Pin1	LOUT_R	Pin2	LOUT_L
Pin3	LOUT_JD	Pin4	GND_AUD
Pin5	LIN_R	Pin6	LIN_L
Pin7	LIN_JD	Pin8	GND_AUD
Pin9	MIC_R	Pin10	MIC_L
Pin11	MIC_JD	Pin12	GND_AUD
Pin13	GND_AUD	Pin14	NC

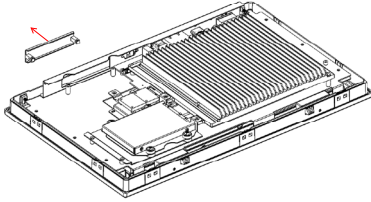


## TPC Embedded Panel Computer Installation

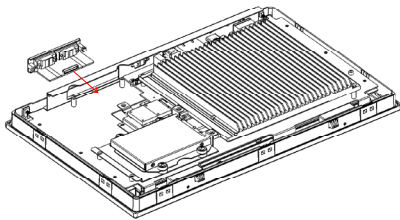
1. Remove the screws from the backplate and lift it off.



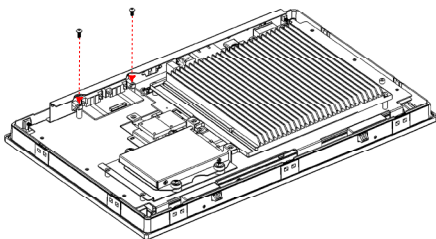
2. Remove the blanking plate screws and the blanking plate.



3. Insert the PCM Module through the blanking plate slot.

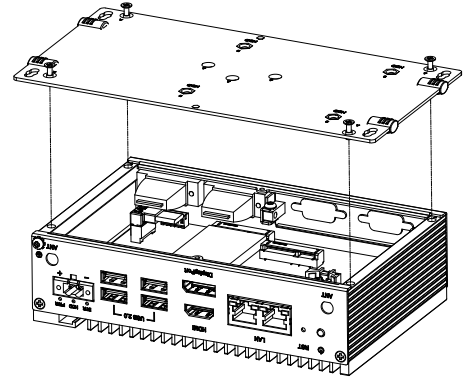


4. Secure the PCM Module with the screws you removed from the blanking plate.

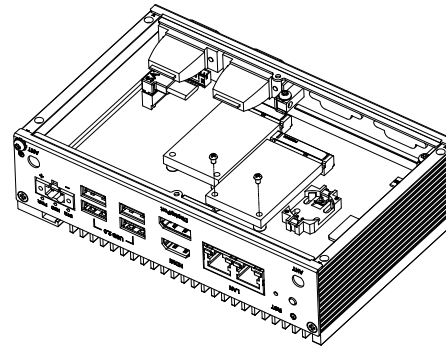


## UNO Embedded Computer Installation

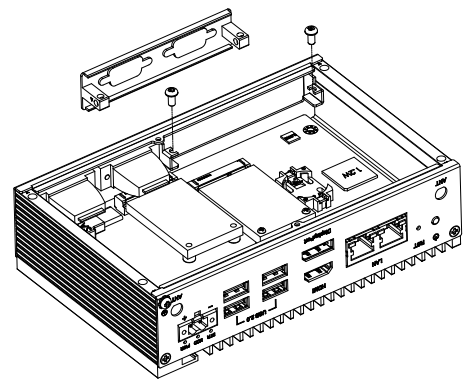
1. Remove the screws from the base plate and lift to remove.



2. Insert the mini-PCIe card and secure the screws



3. Remove the screws to remove the blanking plate.



4. Insert the PCM Module through the blanking plate hole and secure the screws. Attach the PCM Module to the mini-PCIe card with the cable.

