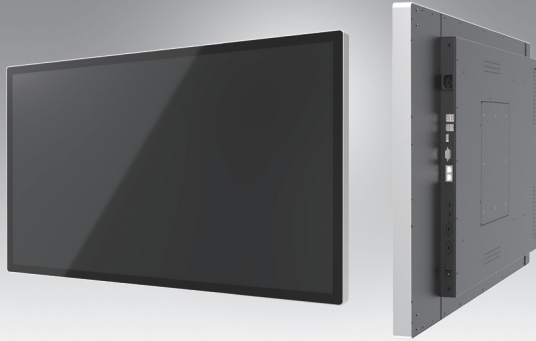


# UTC-542

## 42.5" Ubiquitous Touch Computer UTC-542D with Intel® Celeron® J1900 UTC-542F with Intel® Core™ i5-6300U UTC-542G with Intel® Pentium® N4200

**NEW**



### Features

- Low Power, High Performance and fanless system design
- Built-in Intel® Celeron® J1900 (UTC-542D)
- Built-in Intel® Core™ i5-6300U (UTC-542F)
- Built-in Intel® Pentium® N4200 (UTC-542G)
- 42.5" monitor with 16:9 widescreen display
- IP65-rated front panel for water and dust resistance
- Supports both landscape and portrait screen orientations
- Side groove design for flexible peripheral installation
- Dual hot-swappable HDD/SSD slots with RAID 0/1 support
- Optional mirror coating to support smart mirror applications



### Introduction

UTC-542 features an extra slim border all-in-one computing system equipped with wide format, touch based and mirror coating LCD panel. It is easy to integrate key peripherals for diversified self-service and interactive signage deploy in different application areas. The systems deliver updated information with well-designed interactive interfaces, fully ensure relevant content and targeted promotions are delivered. UTC series touch panel computers are the best investments to enhance user satisfaction, further brand equity, and maximize business profits.

### Specifications

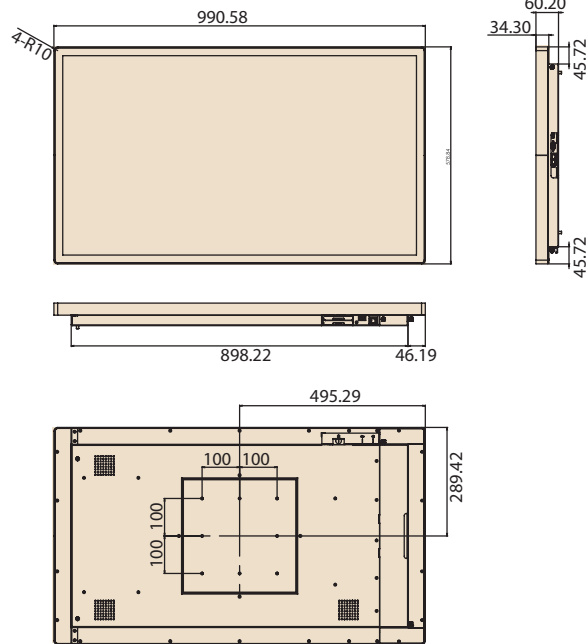
|                              | CPU  | Intel® Celeron® J1900 (UTC-542D)   | Intel® Core™ i7-6600U (Available)*<br>Intel® Core™ i5-6300U (UTC-542F)<br>Intel® Core™ i3-6100U (Available)*  | Intel® Pentium® N4200 (UTC-542G)<br>Intel® Atom® E3950 (Available)* |
|------------------------------|--|--|---|---|
| Processor System             | Base Frequency   | 2 GHz (Quad-Core)  | 2.4 GHz (Dual-Core)   | 1.1 GHz (N4200/Quad-Core)<br>1.6 GHz (E3950/Quad-Core)              |
|                              | Cache  | 2 MB   | 3 MB  | L2 Cache 2MB  |
|                              | Memory   | 1 x 204 pin SO-DIMM DDR3L 1333 MHz up to 8 GB  | 2 x 204 pin SO-DIMM DDR3L 1600MHz up to 16G   | 1 x 204 pin SO-DIMM DDR3L 1867 MHz up to 8GB                        |
|                              | HDD/SSD  | Dual hot-swappable HDD/SSD slots with RAID 0,1 support   |   |   |
|                              | Network (LAN)  | 2 x Gigabit Ethernet ports   |   |   |
|                              | I/O Ports  | 2 x RS-232 COM (RS-422/485)*<br>4 x USB 2.0 / 1 x USB 3.0  |   | 2 x RS-232 COM (RS-422/485)*<br>3 x USB 2.0 / 2 x USB 3.0           |
|                              |  | 2 x Gigabit Ethernet (RJ-45)<br>1 x VGA<br>1 x HDMI  |   | 2 x Gigabit Ethernet (RJ-45)<br>1 x VGA<br>1 x HDMI                 |
|                              | Stereo Speaker   | 10 W x 2   |   |   |
|                              | Bus expansion  | Full-size MiniPCIe/mSATA   |   | Full-size MiniPCIe / M.2  |
|                              | Dimensions (W x H x D)   | 990.6 x 578.8 x 60.2mm (Mirror Glass)<br>1016.9 x 605.2 x 60.5mm (Pcap / Mirror Pcap*)                               |   |   |
| Weight                       | 24.6 kg  |  |   |   |
| OS Support                   | WES 7P 32bit<br>WES 7E 32bit<br>Windows Pro Embedded 7 SP1 64bit<br>WES 8 64bit<br>Windows Embedded 8.1 Industry Pro 64bit<br>Win 10 IoT Enterprise<br>Linux Ubuntu 16.04<br>Android 4.4.2 |  | WES 7P 32bit<br>WES 7E 32bit<br>Windows Pro Embedded 7 SP1 64bit<br>WES 8 64bit<br>Windows Embedded 8.1 Industry Pro 64bit<br>Win 10 IoT Enterprise<br>Linux Ubuntu 16.04 | Win 10 IoT Enterprise<br>Android 6.0<br>Linux Ubuntu 17.04          |
|                              |  |  |   |   |
| Environmental Specifications | Operating Temperature  | 0 ~ 40° C (32 ~ 104° F)  |   |   |
|                              | Relative Humidity  | 10 ~ 95% @ 40° C non-condensing  |   |   |
|                              | Vibration  | 0.5G   |   |   |
|                              | Shock  | 5 G peak acceleration (11 msec. duration)  |   |   |
| Power                        | Front Panel Protection   | IP65/ NEMA4 Compliant  |   |   |
|                              | Input Rating   | 100-240V <sub>AC</sub> ~ 50/60Hz 3.7A  |   |   |
| LCD Display                  | Size/Type  | 42.5" TFT LCD with LED backlight   |   |   |
|                              | Max.Resolution   | 1920 x 1080  |   |   |
|                              | Pixel Pitch (mm)   | 0.49 (H) x 0.49 (W)  |   |   |
|                              | Brightness (cd/m <sup>2</sup> )  | 450 nits   |   |   |
|                              | View Angle   | Horizontal: ±89° or 178° total / Vertical: ±89° or 178° total  |   |   |
| Touch Screen Option (PE/GE)  | Type   | Projected Capacitive Touch Panel / Mirror Glass Panel (No touch function) / Mirror Projected Capacitive Touch Panel* |   |   |
|                              | Light Transmission   | >90% (Pure Glass); >25% (Mirror Coating)   |   |   |
|                              | Controller   | USB Interface  |   |   |

\* Mirror PCap by project request.

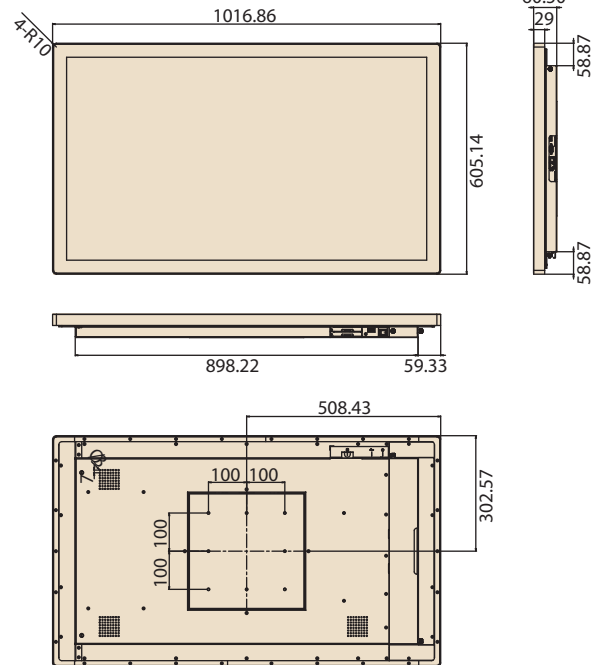
\*\* Only UTC-542D and UTC-542G models support Android OS.

## Dimensions

### Mirror



### Pcap/ Mirror Pcap

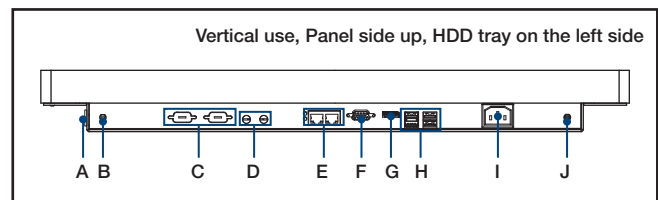


Unit: mm

## Ordering Information

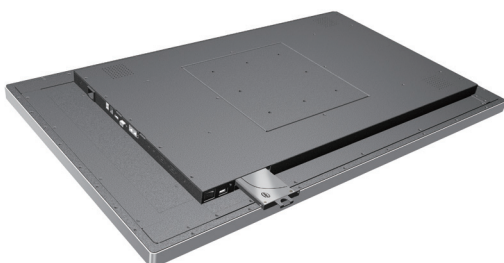
| Part No.        | Description   |
|-----------------|---|
| UTC-542GP-ATB0E | 42.5", Intel® Pentium® N4200, Pcap Touch, 4GB RAM   |
| UTC-542GM-ATB0E | 42.5", Intel® Pentium® N4200, Mirror Glass, 4GB RAM |
| UTC-542DM-ATB0E | 42.5", Intel® Celeron® J1900, Mirror Glass, 4GB RAM |
| UTC-542FM-ATB0E | 42.5", Intel® Core™ i5-6300U, Mirror Glass, 4GB RAM |
| UTC-542DP-ATB0E | 42.5", Intel® Celeron® J1900, Pcap Touch, 4GB RAM   |
| UTC-542FP-ATB0E | 42.5", Intel® Core™ i5-6300U, Pcap Touch, 4GB RAM   |
| 1702002605      | Power Cord 2P FRANCE 10A/16A 220V 1.83M 90D         |
| 1702002600      | Power Cord 3P UL/CSA(USA) 125V 10A 1.83M 180D       |
| 1700000596      | Power Cord (China) CCC, 10A 250V, 3P 1830mm         |
| 1700018704      | Power Cord UK BSI 2P 10A 250V 180cm 18AWG           |

## Fully- Integrated I/O



- A. Power Switch
- B. Antenna Port
- C. COM x 2
- D. Mic-in/ Line-out
- E. LAN x 2
- F. VGA
- G. HDMI
- H. USB 3.0 x 1, USB 2.0 x 3 (Baytrail)  
USB 3.0 x 2, USB 2.0 x 2 (Skylake)
- I. AC Power
- J. Antenna Port

### Easy Swappable HDD/SDD Slot



### Peripherals for UTC-542 series

| Part No.      | Description                                      |
|---------------|--|
| UTC-542P-B02E | 2D Barcode Scanner for UTC-542 (USB connection)  |
| UTC-542P-C01E | 5M Camera Module For UTC-542 (USB connection)    |
| UTC-542P-F01E | Finger Print Reader For UTC-542 (USB connection) |
| UTC-542P-M01E | Magnet Strip Reader For UTC-542 (USB connection) |
| UTC-542P-R01E | RFID Reader For UTC-542 (USB connection)         |
| UTC-542P-S01E | Smart Card Reader For UTC-542 (USB connection)   |

### Installation Accessory

| Part No.         | Description             |
|------------------|-------------------------|
| UTC-WALL-MOUNT2E | VESA Mount 200 x 200 mm |