

# Current transformer CT27 – Class 1

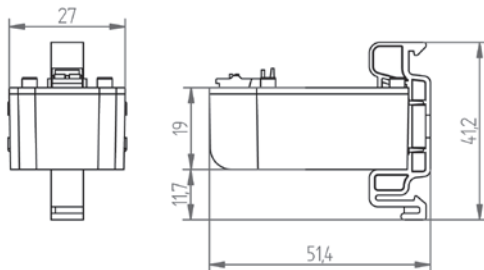
## Compact innovation

- Compact current transformer
- Particularly well suited to digital measurement devices
- Current transformer per IEC 61869-2
- Transformation ratios 35/1, 64/1 A, class 1
- Primary conductor feed-through window for insulated cable up to Ø 7.5 mm
- For use on a 3-phase circuit breaker with phase spacing of 17.5 mm
- DIN rail mounting (35 mm) via rail clamps (optional)
- Plug-in type CTs (Lego concept)



## Dimension diagrams

All dimensions in mm



## Technical data

| Technical data                      |   |
|-------------------------------------|---|
| <b>Environmental conditions</b>     |   |
| Position of installation            | Indoor usage; only for insulated conductors                       |
| Ambient temperature                 | -10 ... +55 °C  |
| Relative humidity                   | 5 ... 85 % (no condensation)                                      |
| Protection class                    | IP20  |
| <b>Application conditions</b>       |   |
| Standard                            | IEC 61869-2   |
| Thermal short time rated current    | 60 x I <sub>n</sub> / 1 s   |
| Thermal continuous current          | 100 %   |
| Rated isolation level               | 0.72 / 3 / kV   |
| Rated frequency                     | 50 / 60 Hz  |
| Insulation class                    | E (120 °C)  |
| Cable feed through window           | Ø 7.5 mm  |
| Secondary conductor (spring clamps) | Wire cross section: 0.2 ... 1.5 mm <sup>2</sup> ; rigid, flexible |

| Current transformer CT27 – Class 1 |  |                        |                               |  |                              |             |           |
|------------------------------------|--|------------------------|-------------------------------|--|------------------------------|-------------|-----------|
| Type                               | Primary current in A                                       | Secondary current in A | Power in VA (at the terminal) | Max. diameter, primary conductor in mm | Dimensions in mm (H x W x D) | Weight (kg) | Item no.  |
| CT27-35                            | 35   | 1                      | 0.2                           | 7.5                                    | 46 x 27 x 23                 | 0.05        | 15.03.080 |
| CT27-64                            | 64   | 1                      | 0.2                           | 7.5                                    | 46 x 27 x 23                 | 0.04        | 15.03.081 |
| <b>Accessories</b>                 |  |                        |                               |  |                              |             |           |
| Mounting clip                      | For DIN rail EN 50022-35, suitable for CT27-35 and CT27-64 |                        |                               |  | 14 x 41 x 27                 | 0.001       | 09.09.010 |