

# Feedthrough residual current transformer

## Main features

- Makes it possible, in conjunction with the residual current relay, to determine the residual current to earth of machines or systems
- Compact construction
- Detection of very small currents
- Designed to increase the sensitivity of residual current breakers (personal protection) and general circuit breakers
- Suitable for the UMG 96 RM-E, UMG 20CM, UMG 509, UMG 512



## Technical data



General data	
Insulation voltage	0,72 kV
Frequency	3 kHz
Operating temperature	-10 to +55 °C
Test voltage	3 kV RMS 50 Hz / 1 min.

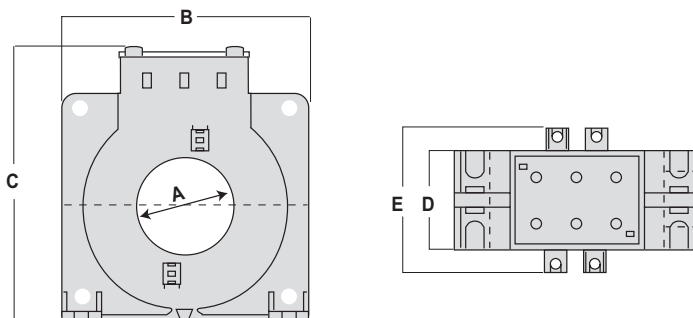
Device overview - Plug-in residual current transformer type A			
Type	Transformation ratio	Max. primary residual current in mA*	Item no.
CT-AC RCM 35N	700/1	21000	15.03.458
CT-AC RCM 80N	700/1	21000	15.03.459
CT-AC RCM 110N	700/1	21000	15.03.463
CT-AC RCM 140N	700/1	21000	15.03.460
CT-AC RCM 210N	700/1	21000	15.03.464

\* Bei Verwendung der Analogeingänge des UMG 96RM-E, UMG 509 und UMG 512



## Dimension diagrams

All dimensions in mm



Dimensions - Plug-in residual current transformer type A						
Type	Dimensions in mm					Weight (kg)
	A	B	C	D	E	
CT-AC RCM 35N	35	92	113	36	56	0,25
CT-AC RCM 80N	80	125	160	36	56	0,35
CT-AC RCM 110N	110	165	198	36	56	0,50
CT-AC RCM 140N	140	200	234	36	56	0,70
CT-AC RCM 210N	210	290	323	44	64	1,20