

MS-9Z08

HMI-C170H3CS4

Waterproof Panel PC



User Manual

Index of Contents

0. BEFORE INSTALLATION	5
1. APPEARANCE	6
2. SYSTEM INSTALLATION	7
2.1 DIMENSIONS	7
2.2 POWER CONTROL BUTTON	8
3. I/O DEFINITION	9
3.1. POWER CONNECTOR	9
3.1.1 DC IN M/B Pin.....	9
3.1.2 DC IN M12 Pin.....	9
3.1.3 AC IN Adapter Pin (90°).....	10
3.1.4 AC IN M12 Pin.....	10
3.2. LAN RJ45 CONNECTOR	11
3.2.1 LAN M/B Pin	11
3.2.2 LAN M12 Pin.....	11
3.3. USB 2.0 CONNECTOR	12
3.3.1 USB 2.0 M/B Pin	12
3.3.2 USB 2.0 M12 Pin.....	12
3.4. SERIAL PORT	13
3.4.1 Serial M/B Pin.....	13
3.4.2 Serial M12 Pin	13
4. TROUBLESHOOTING	14
5. SPECIFICATIONS	16
6. DRIVER INSTALLATION	17
6.1 INSTALL CD WITH 2 EGALAXTOUCH DRIVER INSTRUCTIONS	17
6.2 INSTALLING TOUCH SCREEN CONTROLLER (OPTION) (HID_INSTALL_PACKAGE)	17
6.2.1 eGalax Touch Utility.....	23
6.3 INSTALLING TOUCH SCREEN CONTROLLER (OPTION) (EGALAXTOUCH)	24
6.3.1 eGalax Touch Utility.....	30

Attention

1. This manual contains important information for the proper setup and maintenance of the product(s). Before setup and usage of the product(s), please read through this manual thoroughly.
2. The specifications shall apply only to the product(s) in this manual.
3. The specifications may be modified without any notice in advance. Please inquire with your supplier for latest specifications, drivers or manuals.

Battery Information



European Union:

Batteries, battery packs, and accumulators should not be disposed of as unsorted household waste. Please use the public collection system to return, recycle, or treat them in compliance with the local regulations.



廢電池請回收

Taiwan:

For better environmental protection, waste batteries should be collected separately for recycling or special disposal.

California, USA:

The button cell battery may contain perchlorate material and requires special handling when recycled or disposed of in California.

For further information please visit:

<https://www.dtsc.ca.gov/hazardouswaste/perchlorate/>

Danger of explosion if battery is incorrectly replaced. Replace only with the same or equivalent type recommended by the manufacturer.

0. Before Installation

When unpacking please check if you have the following items:

◆ MS-9Z08(HMI-C170H3CS4) Machine

◆ Accessory Package

◇ Driver CD

◇ Power Supply Kit (choose one of below)

DC IN (Power cord+M12 Adapter) x1

AC IN (M12 Power cord) x1

◇ M12 LAN1 x1


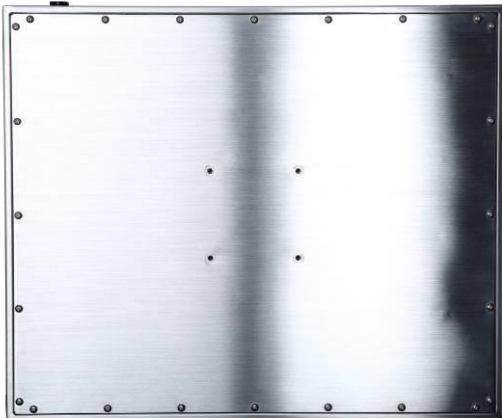




◇ M12 USB2.0 x2

◇ M12 RS-232 x1 (COM1)

* If any items are missing or damaged, please contact us immediately.

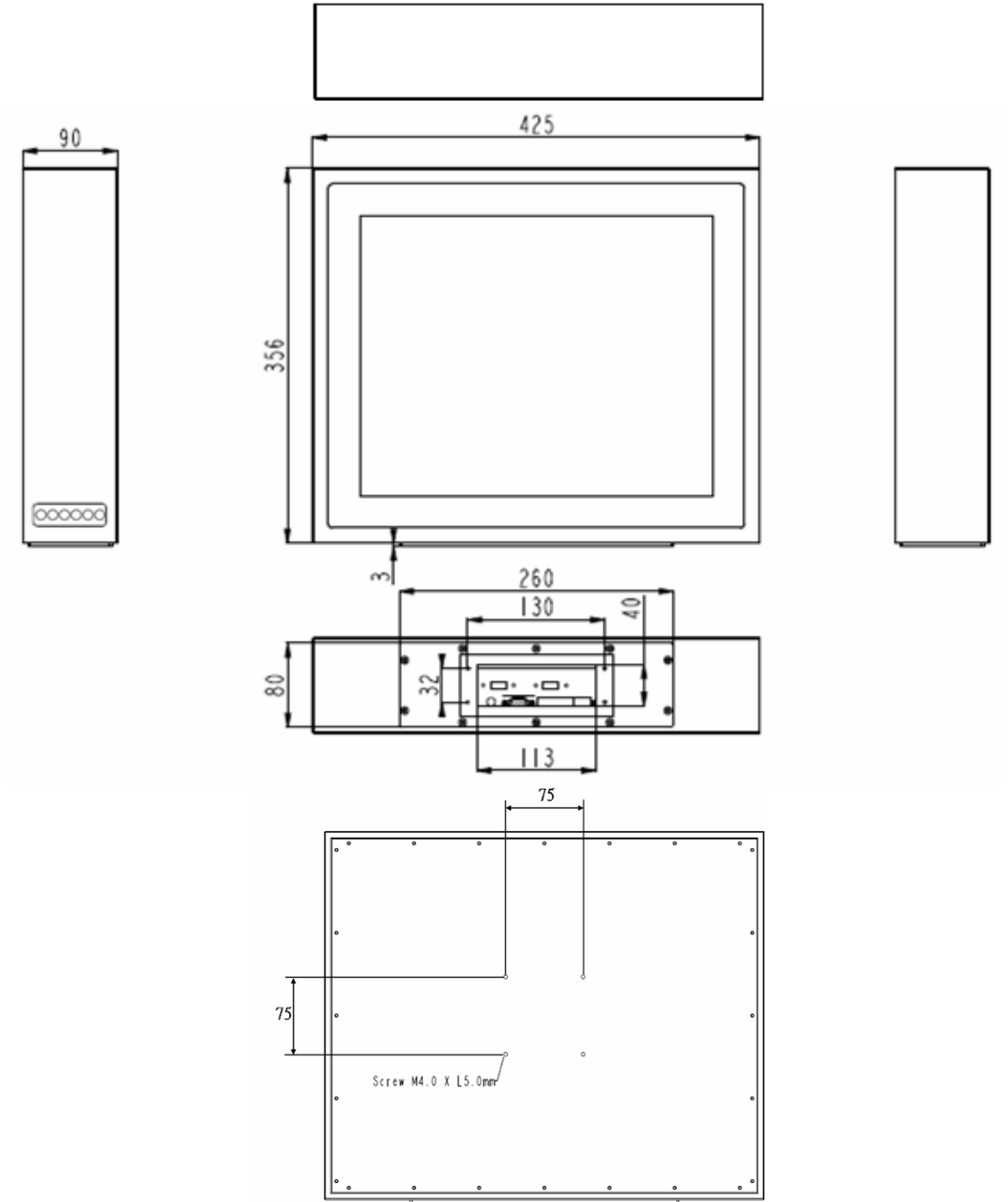
* The contents of your package may vary depending on the model purchased.

1. Appearance

Front View	Back View
	
Side View (L)	Side View (R)
	
M12 Connector Type	Stand-alone Circular Type
	

2. System Installation

2.1 Dimensions



2.2 Power Control Button



Reset

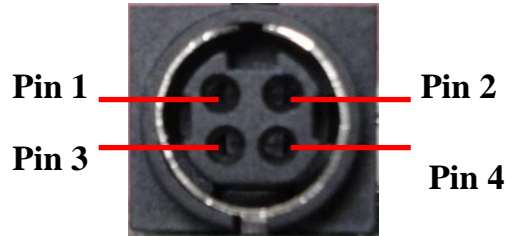
Power on/off

Button	Function
	Power on/off
	HDD LED
	Power LED
	Reset

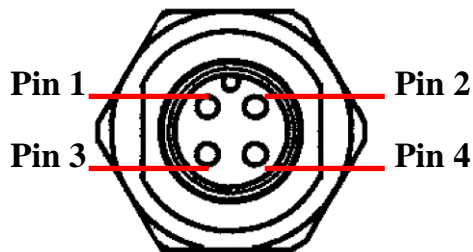
3. I/O Definition

3.1. Power Connector

3.1.1 DC IN M/B Pin



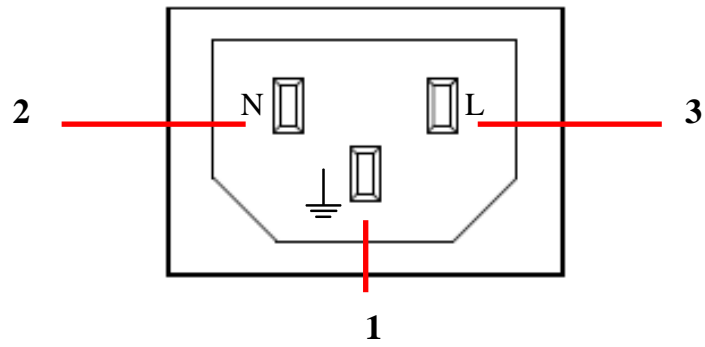
3.1.2 DC IN M12 Pin



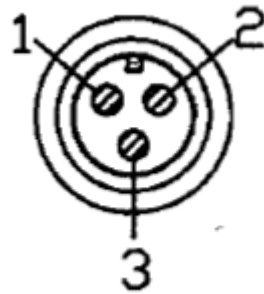
Pin Assign and Definition

M/B Pin No.	M12 Pin No	Description
1	1	+12V DC
2	2	+12V DC
3	3	GND
4	4	GND

3.1.3 AC IN Adapter Pin (90°)



3.1.4 AC IN M12 Pin

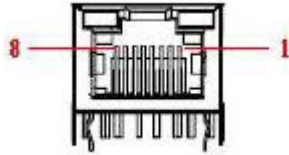


Pin Assign and Definition

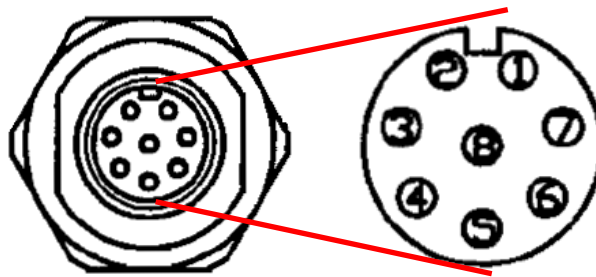
M/B Pin No.	M12 Pin No	Description
1	1	E
2	2	N
3	3	L

3.2. LAN RJ45 Connector

3.2.1 LAN M/B Pin



3.2.2 LAN M12 Pin

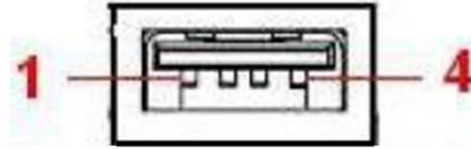


Pin Assign and Definition

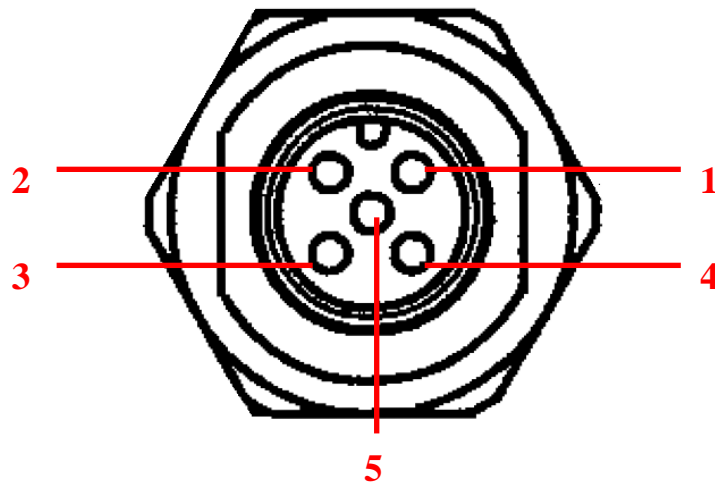
M/B Pin No..	M12 Pin No	Description
1	6	TX1+
2	4	TX1-
3	5	TX2+
4	1	TX3+
5	8	TX3-
6	7	TX2-
7	2	TX4+
8	3	TX4-

3.3. USB 2.0 Connector

3.3.1 USB 2.0 M/B Pin



3.3.2 USB 2.0 M12 Pin

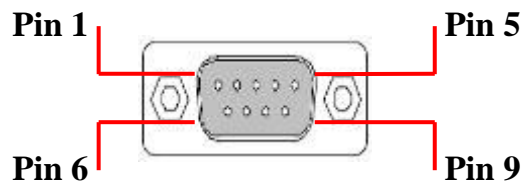


Pin Assign and Definition

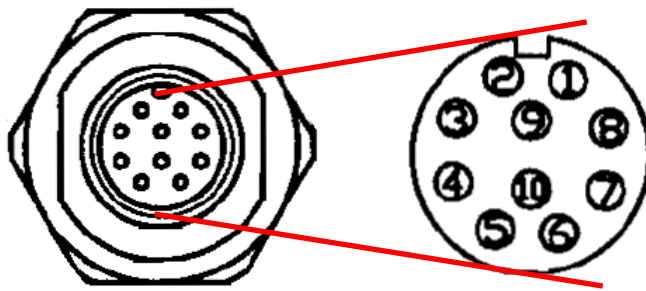
M/B Pin No.	M12 Pin No.	Description
1	1	VCC
2	2	USB D-
3	3	USB D+
4	4	GND
SHELL	5	BRAID

3.4. Serial Port

3.4.1 Serial M/B Pin



3.4.2 Serial M12 Pin



Pin Assign and Definition

M/B Pin No..	M12 Pin No	Description
		RS-232
1	1	DCD
2	2	RXD
3	3	TXD
4	4	DTR
5	5	GND
6	6	DSR
7	7	RTS
8	8	CTS
9	9	N/A
N/A	10	N/A

4. Troubleshooting

⊙ **My system does not start.**

1. Check if the system is connected to an electrical outlet and it is turned on.
2. Check if the power cord and all cables are connected firmly.
3. Press the “Power On” button to turn it on again.

⊙ **When I turn on my computer, the message “Operating System not found” appears or Windows does not start.**

1. Check if the OS has been properly installed.
2. Check Boot Device Priority settings in the BIOS Setup.

⊙ **The image is distorted, flashes or flickers.**

1. Select the correct resolution, refresh rate and make adjustment.

⊙ **The image is blurred.**

1. Change the resolution, refresh rate and make adjustment.

⊙ **The system cannot be shut down.**

It is best to shut down your computer using the Shut Down icon in the operating system. Using other methods, including those listed below, may result in data failure. If the Shut Down procedure does not work, choose one of the following steps:

1. Press Ctrl+Alt+Del keys, then choose Shut Down.
2. Press and hold the power button till the system is off.
3. Unplug the power cable from the system.

⊙ **The Internet connection has problems.**

1. If you are having a problem connecting to your Internet Service Provider (ISP), check if the ISP is experiencing technical problems.
2. Check the Network settings and connection and make sure the system is properly configured to Internet access.
3. The wireless LAN data transfer speed is affected by distance and obstructions between devices and access points. To maximize the data transfer speed, choose the access point closest to your system.

© **System monitor shows no display.**

1. Check if the system is connected to an electrical outlet and is turned on.
2. The system may be in Standby mode. Press any key to activate the Display.

5. Specifications

Display	LCD Size	17"
	Resolution	1280x1024
	Brightness (cd/m ²)	250
	Contrast Ratio	1000:1
	Support Colors	16.7M
	Pixel Pitch (H/Vmm)	0.264 x 0.264
	Viewing Angle	H: 170 degree V: 160 degree
Touch Panel	Projective Capacitive touch panel	
System Processor	CPU	7th Gen Intel® Embedded Mobile Kaby Lake-U Core™ i3-7100U Processor, DC, 15W
	Frequency	2.40 GHz
	L2 Cache	3 MB
	Chipset	SoC
Memory	Technology	Single-channel DDR4 2133MHz
	Max. Capacity	Up to 16 GB (Default 4GB)
	Socket	1 x 260-pin SO-DIMM
Ethernet	Controller	1 x Intel® I210-AT GbE LAN
Expansion Slot	Mini-PCIe	2 x Full-size (Mini-PCIe1 Slot w/ NANO SIM-Holder) (Mini-PCIe2 Slot w/ mSATA)
Storage	SATA	1 x 2.5" HDD/SSD (Default 128GB SSD)
	mSATA	1 (Shared with Mini-PCIe2)
I/O Interface	RJ-45	1
	USB	2 x USB 2.0
	Serial	1 x COM COM1: RS-232, w/o power
Power Supply	DC Input	DC-in 12V
Environment	IP Rating	Full IP65
	Operating Temperature	0° ~ 50°C
	Operating Humidity	10% ~ 90% non-condensing
	Storage Temperature	-20° ~ 60°C
	Storage Humidity	10% ~ 90% non-condensing
Physical Characteristics	Housing	Stainless-Steel 304
	Dimensions (L x W x D)	425mm x 356mm x 90mm
	Weight	9.0 kg
	Mounting	VESA 75
Certification	EMC	FCC, CE Class B
Software Platform	OS Support	Windows 10 (64-bit)

6. Driver Installation

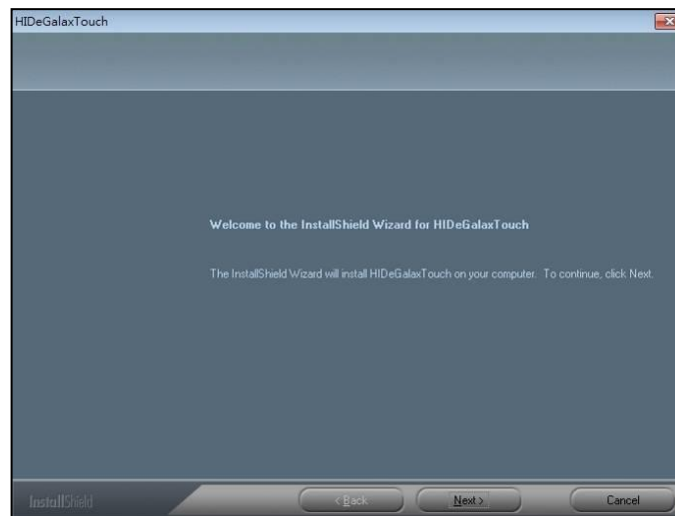
6.1 Install CD with 2 eGalaxTouch Driver instructions

1. HID_Install_Package : Refer to Section 6.2 for resistive type drivers that simulate projected capacitive cursors.
2. eGalaxTouch: Refer to Section 6.3 for the original standard resistive Touch Driver.

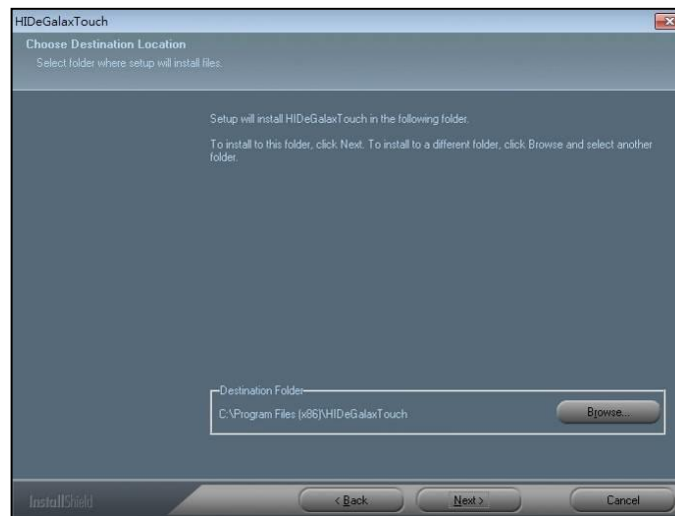


6.2 Installing Touch Screen Controller (Option) (HID_Install_Package)

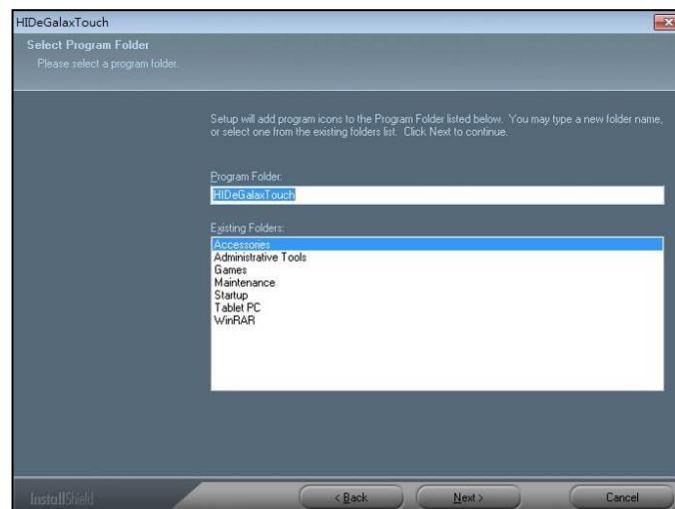
1. Double click on “setup.exe” in driver folder, then click “Next” to start driver installation.



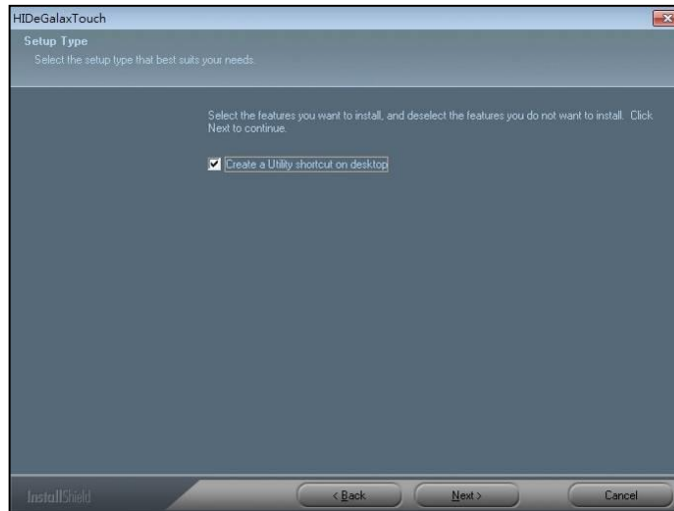
2. Click Browse and Select another folder and Click “Next”.



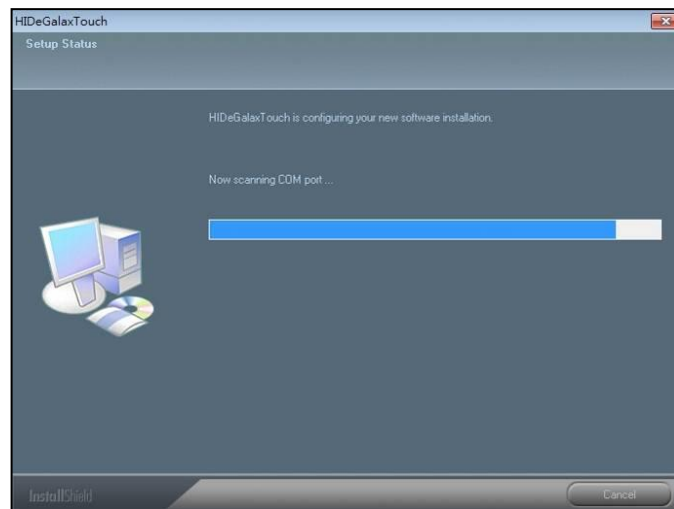
3. Click “Next” to continue.



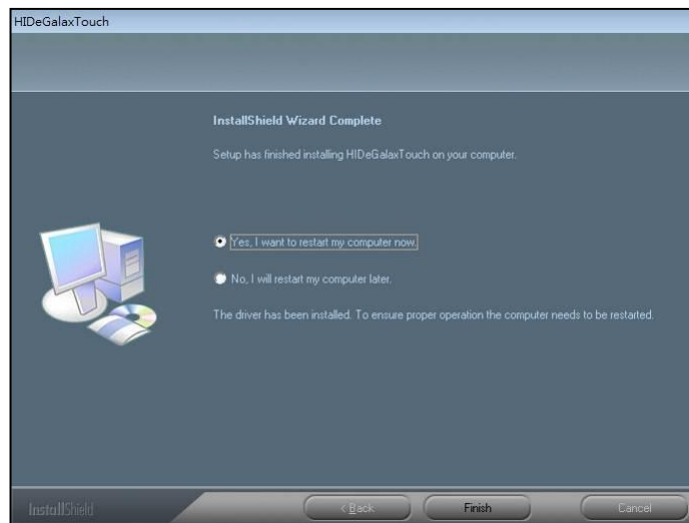
4. Click “Next” to continue.



5. Wait for the setup program to complete copying files. This includes USB/COM interface drivers.



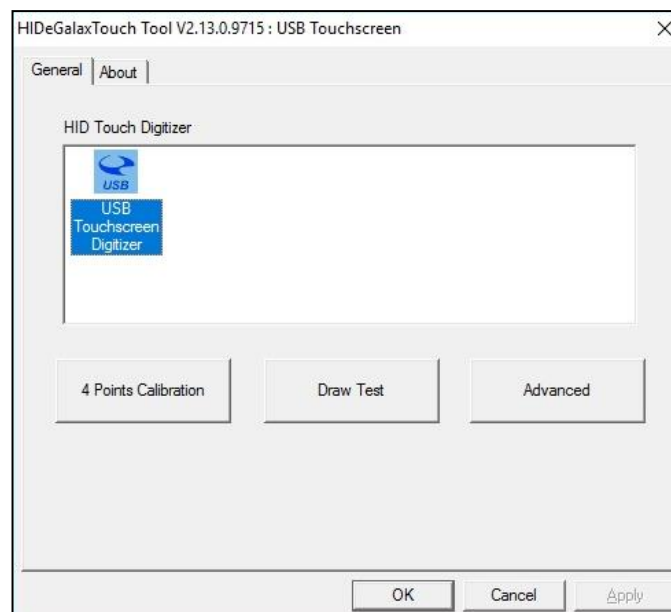
6. Click Finish to continue (Prior to re-starting computer, save any software or files).



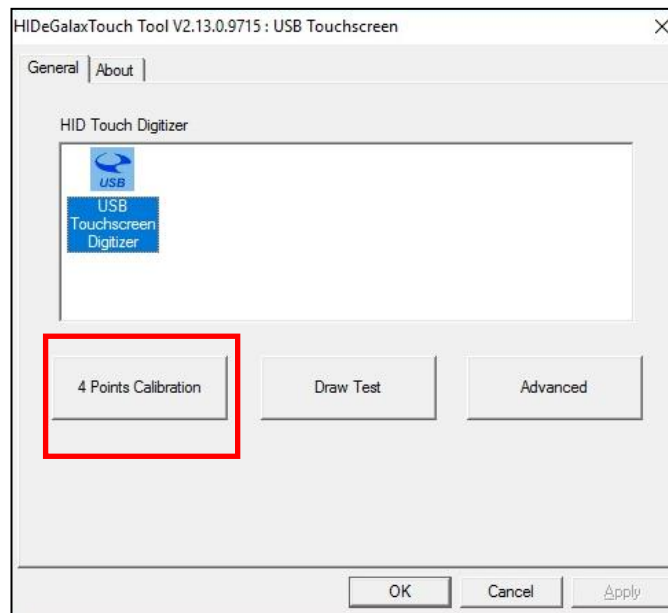
7. After rebooting, please click on the desktop HIDeGalaxTouch.



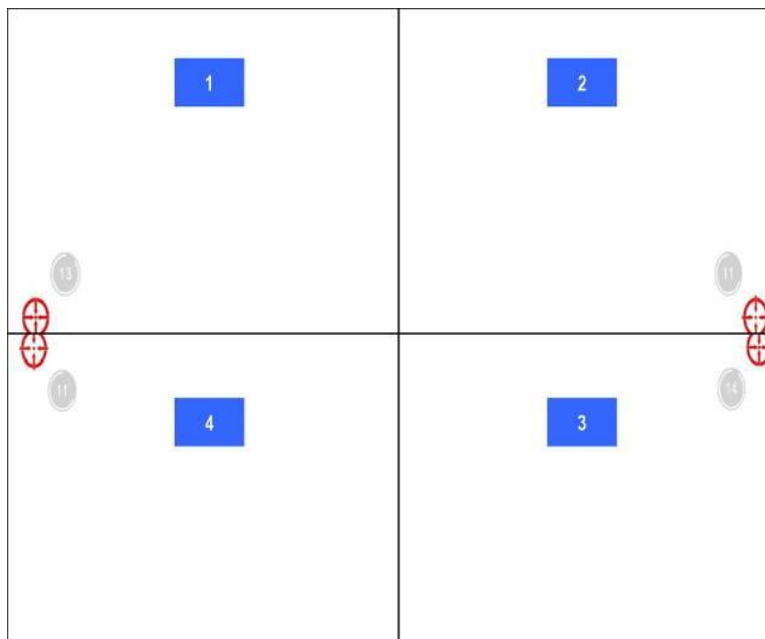
8. Check if the interface detected in the figure matches (USB or RS-232).



9. Click 4-point calibration.

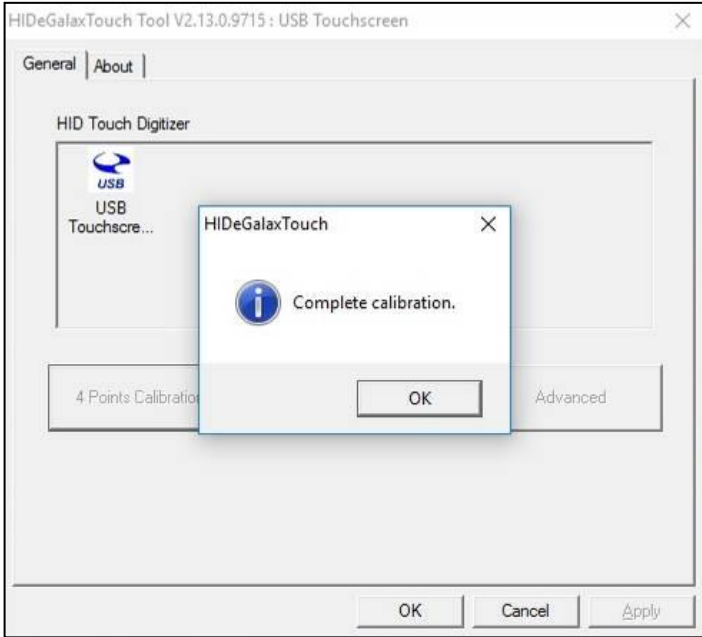


The calibration screens will appear as follows:



User should follow the guide to touch and hold the blinking symbol in the calibration window until it shows "OK" to make sure that the utility can gather enough data for computation.

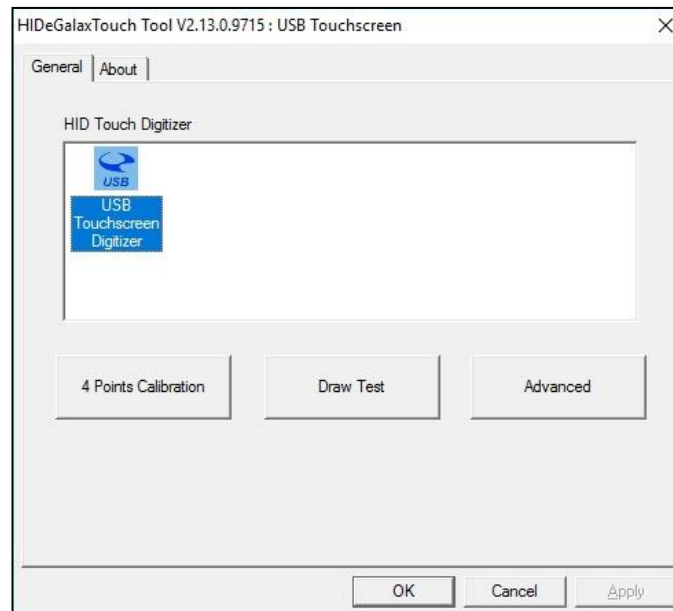
10. Calibration is complete.



6.2.1 eGalax Touch Utility

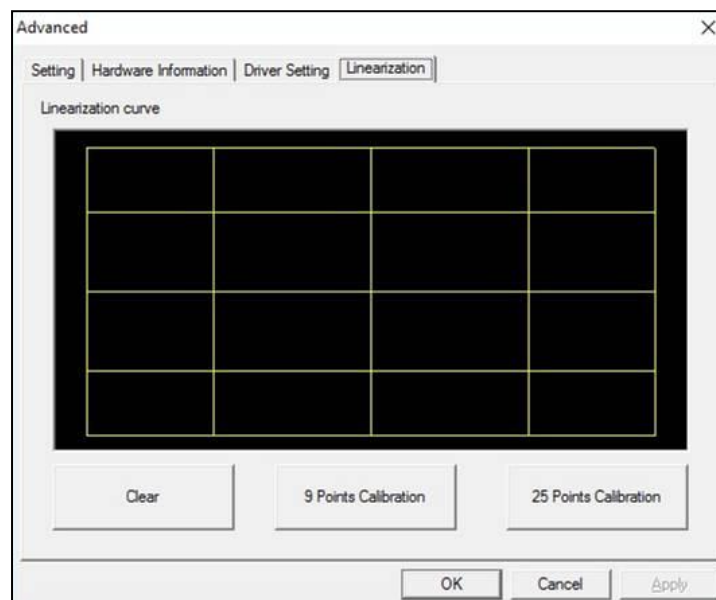
1. General tools properties page

This page includes 4-point testing, Draw test, and advanced tools.



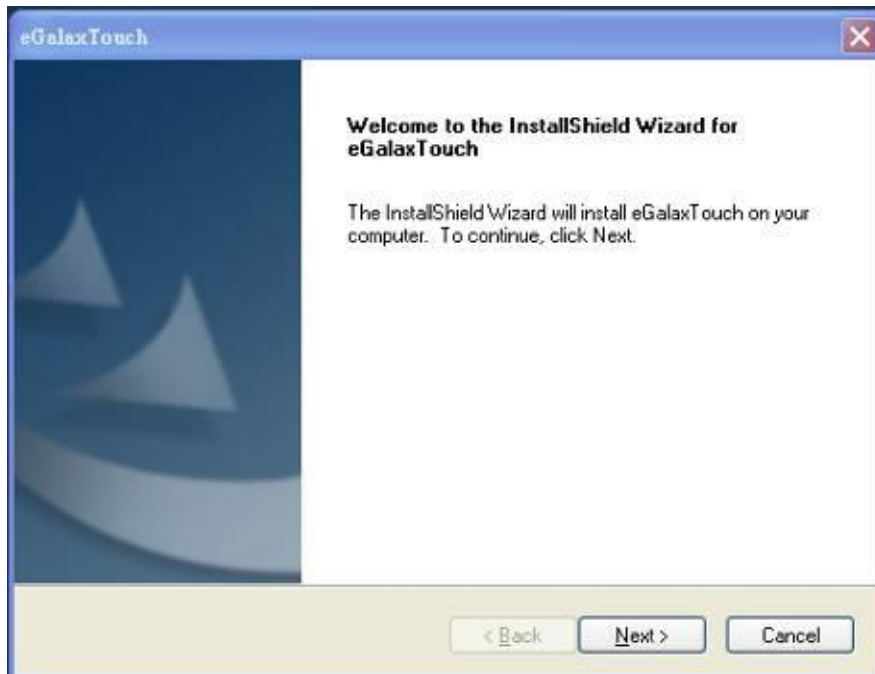
2. Advanced tools properties page

This page can clear calibration records and perform 9-point calibration & 25-point Calibration.

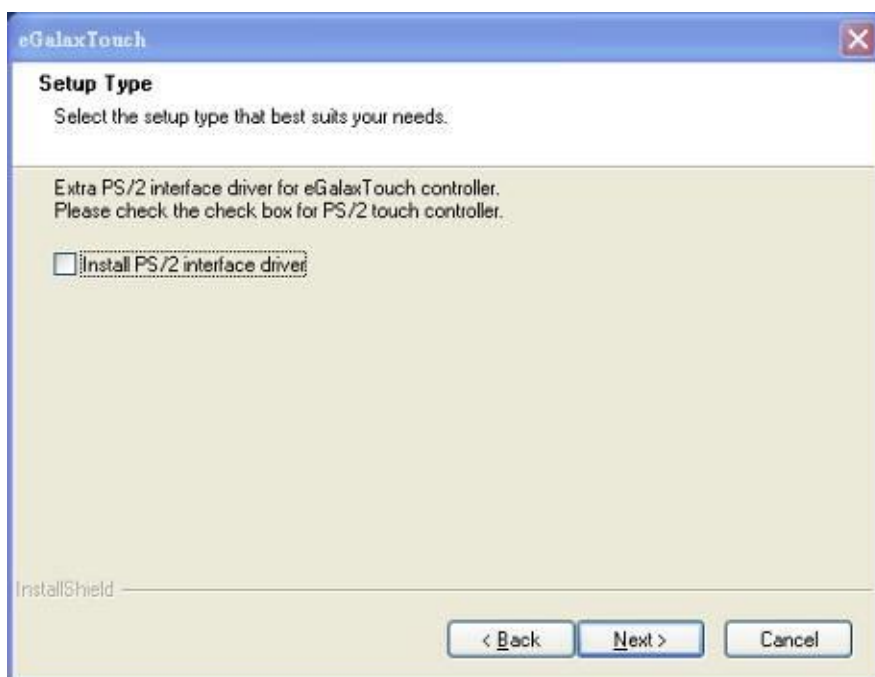


6.3 Installing Touch Screen Controller (Option) (eGalaxTouch)

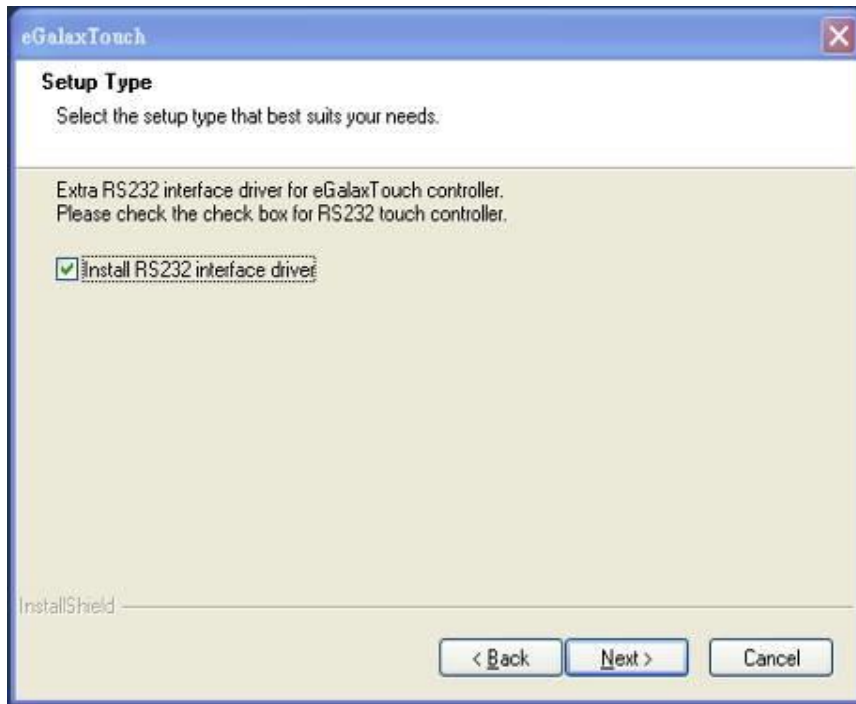
1. Double click on “setup.exe” in driver folder then click “Next” to start driver installation.



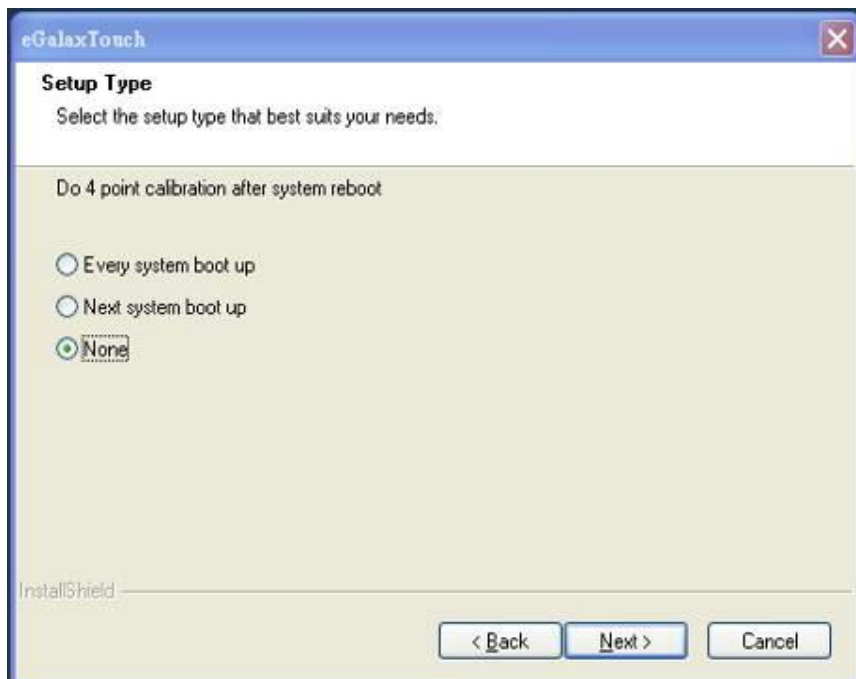
2. Click “Next” to continue. Select an interface device to install.



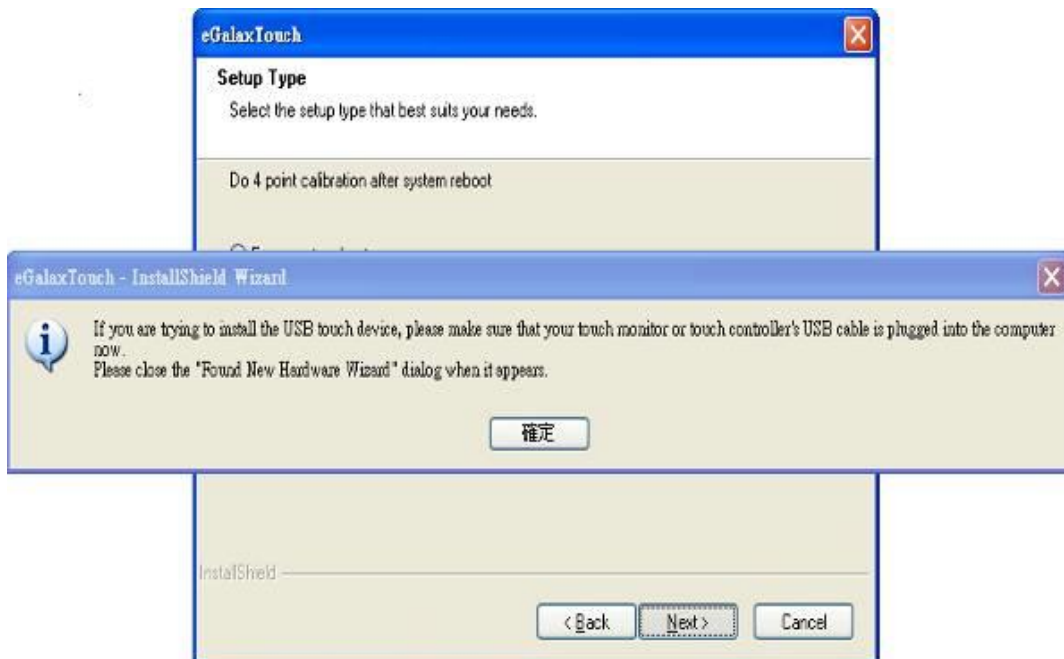
3. Click “Next” to continue.



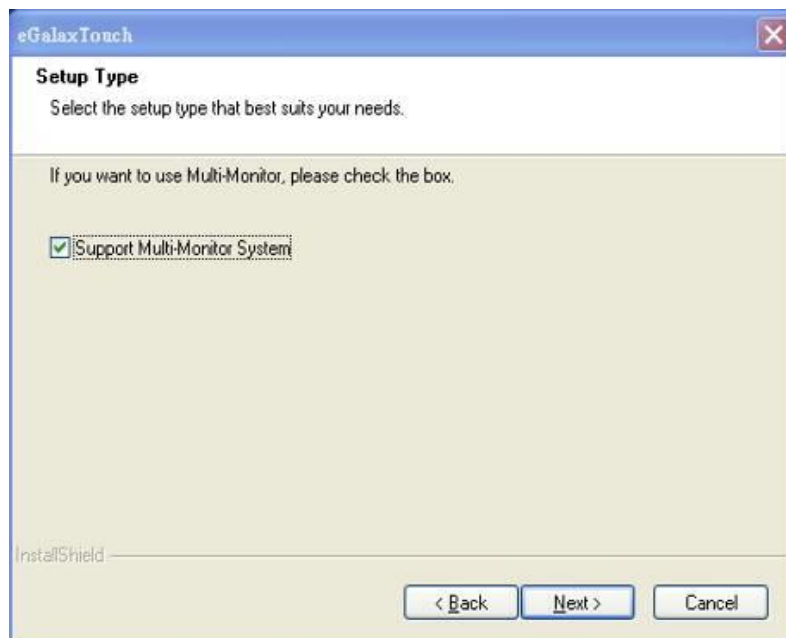
4. Click “Next” to continue.



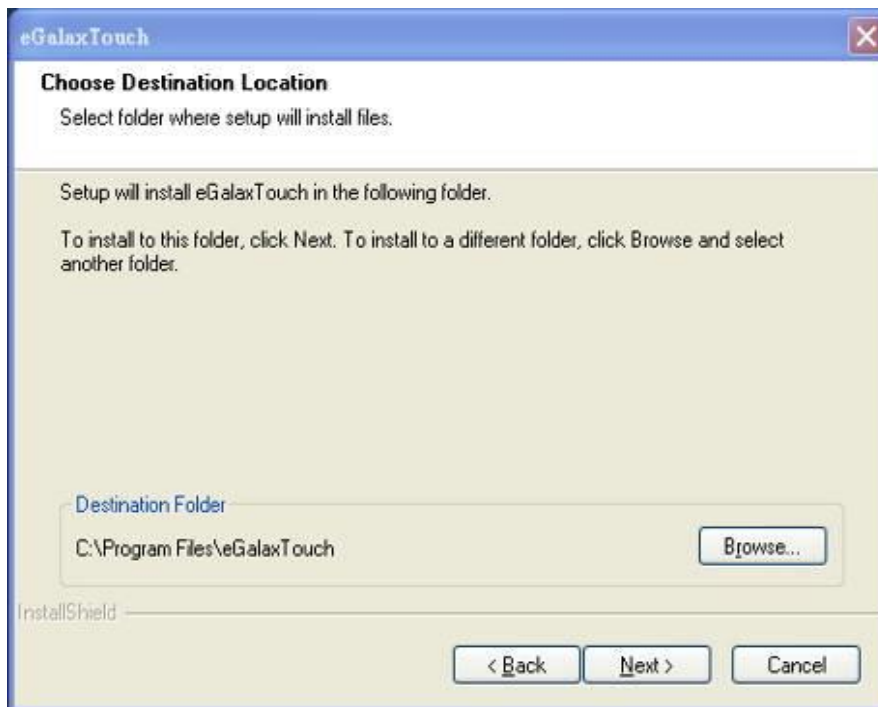
5. Click “OK” to continue.



6. Click “Next” to continue.



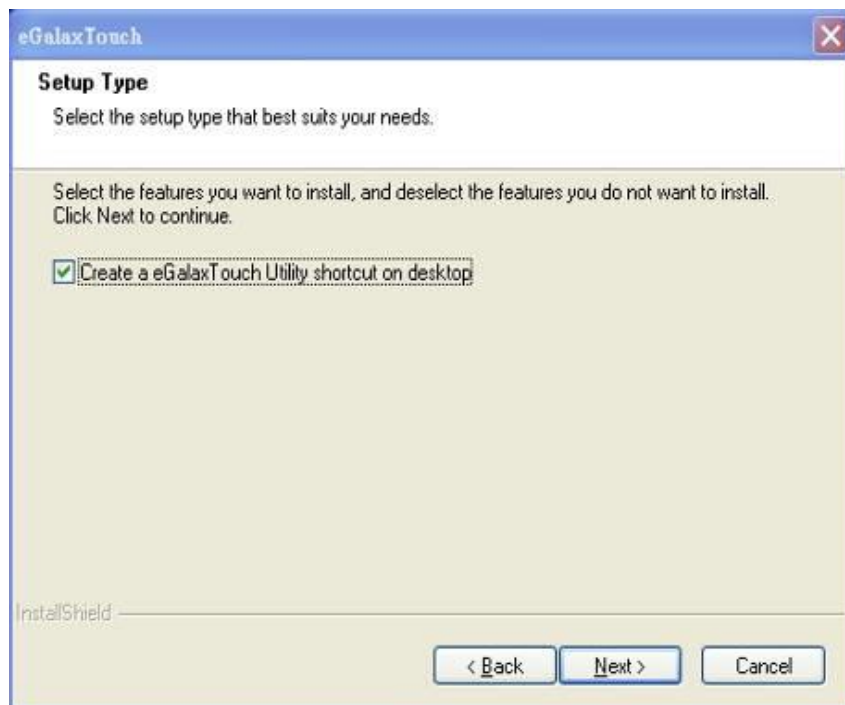
7. Click Browse and Select another folder and Click “Next”.



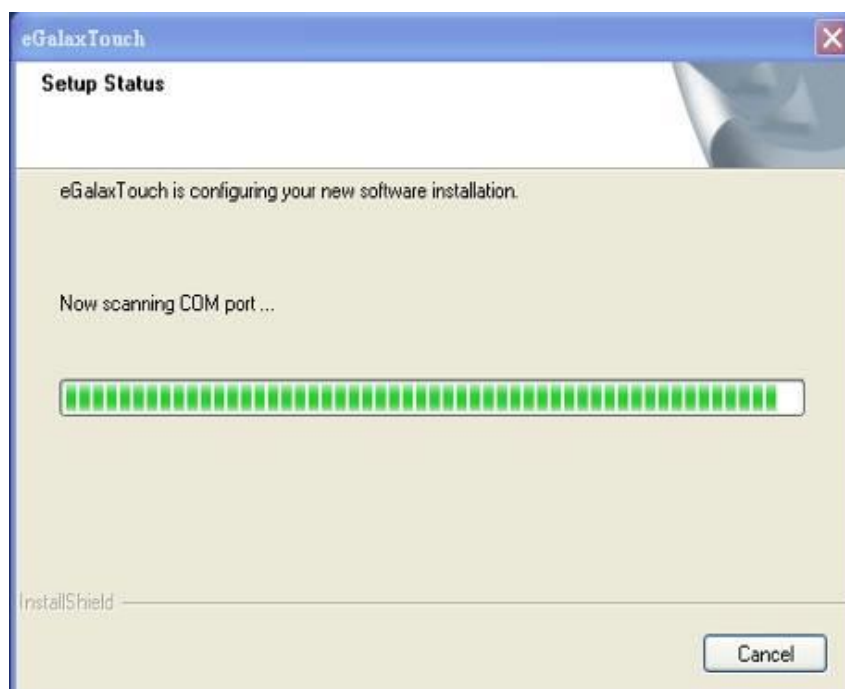
8. Click “Next” to continue.



9. Click “Next” to continue.



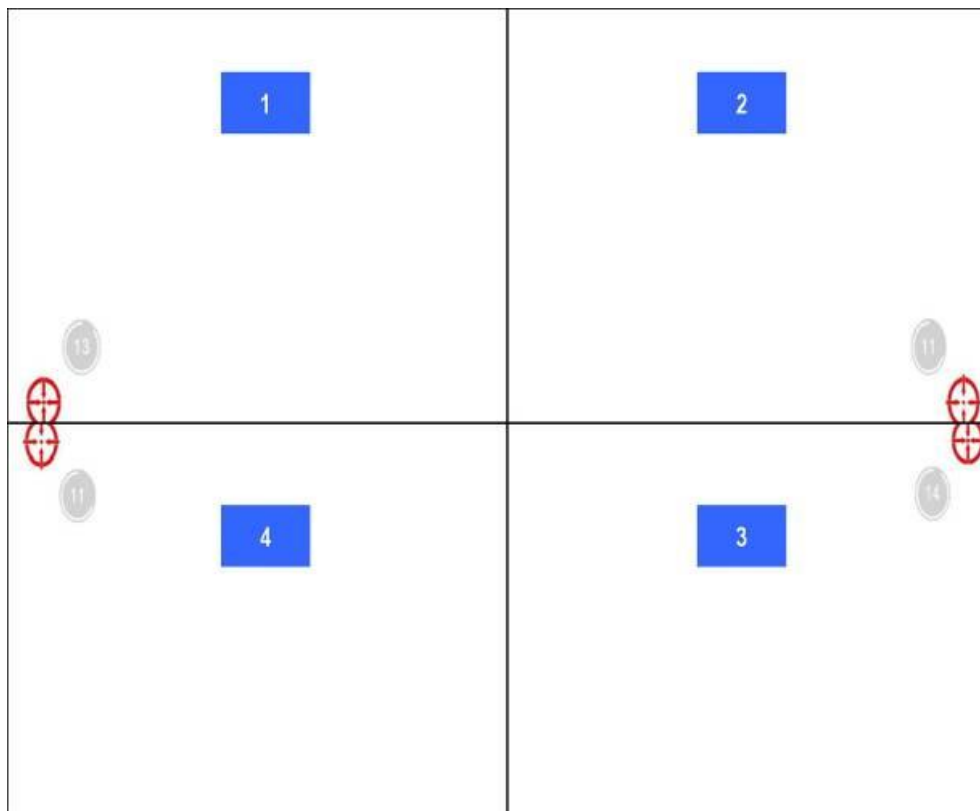
10. Wait for the setup program to complete copying files - also includes USB/COM interface.



11. Click “Yes” or “No” to confirm driver installation for this new-found device.



The calibration screens will appear as follows:

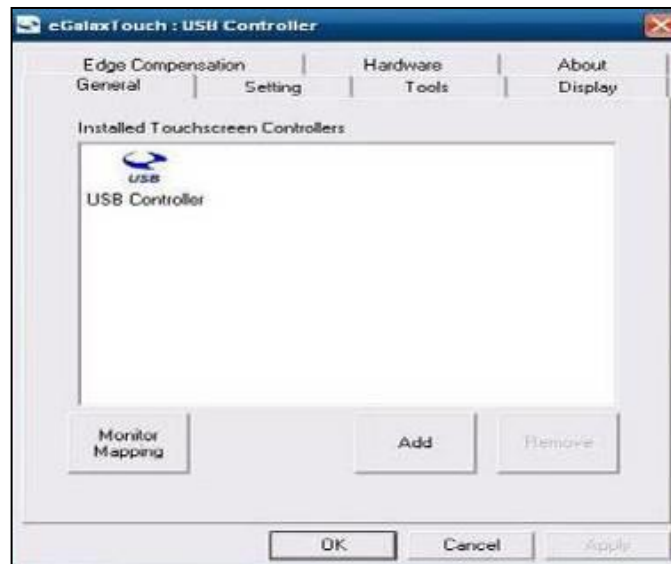


User should follow the guide to touch and hold the blinking symbol in the calibration window until it shows “OK” to make sure that the utility can gather enough data for computation.

6.3.1 eGalax Touch Utility

1. General Property Page

The general property page in eGalax Touch utility shows all eGalax Touch screen controllers installed as shown below, including USB or RS-232.



2. Tools Property Page

Calibration draw test tools and the linearity curve of the touch screen were listed in this property page shown below for user to perform touch screen calibration and touch position test.

